



# Tales & Trails

## NEWSLETTER OF THE BERLIN AREA HISTORICAL SOCIETY

### SPECIAL POINTS OF INTEREST:

- New website for Wisconsin Bandshells and Stands
- BAHS and Berlin Library sponsoring program
- Market Square Monument
- Our first museum building—Clark School

### INSIDE THIS ISSUE:

Museum Building gets new railings	2
Museum Displays for 2018	2
Young Writers Camp use vintage typewriters	2
An Early History of Clark School	3
Membership & Meetings	4

At the beginning of the year BAHS was asked to participate in helping to create a new website by providing information, stories, newspaper articles and photos about our gazebo at Nathan Strong Park. The site went live in July and we are proud to be a part of this unique venture. If you google [wibandshellsandstands.com](http://wibandshellsandstands.com) you can see our contribution and read about others in the state.

### About Wisconsin Bandshells & Stands



2005; Lakeside Park Bandshell, Fond du Lac, WI

Wisconsin Bandshells and Stands is a collection of bandshells and bandstands in the state. It includes photos, history and anecdotes. The material was gathered over a period of several years with the intent making it available for your enjoyment. Updates from you are most welcome.

Bandshells and bandstands abound across the state of Wisconsin. Almost any evening during the summer, music or other entertainment can be heard or seen. From Superior to Kenosha, from Florence to Monroe, people of all ages gather to enjoy the performances. Usually entertainment is provided by local musicians and artists who have practiced throughout the year to bring their talents for viewing and

hearing. Various kinds of music is played for regularly scheduled concerts, festivals, or Fourth of July celebrations. The sites also are often used for weddings, military ceremonies, or other special events. The surroundings of the bandstands and bandshells, such as veteran memorials, artistic sculptures, athletic fields, and other historic community buildings, reflect the community.

- Each bandstand or bandshell has a unique story to tell. They are
- old and historic or modern with new and up-to-date technology;
  - serve large or small audiences;
  - simple or elaborate in design;
  - near lakes, rivers, ponds, lagoons, or in centrally located parks;
  - in cities, villages, and townships;
  - built with privately gifted funds, Work Progress Administration funds during the 1930s, and/or other public funds;
  - and are dedicated to local leaders or band masters or groups.

They hold and make memories, are fun, and appeal to all ages. They form a part of our Wisconsin fabric, heritage, and culture.

## BAHS TEAMING WITH BERLIN PUBLIC LIBRARY TO BRING FREE PROGRAM IN SEPTEMBER

On Thursday, September 20th BAHS and the Public Library presents ‘*Completely Different Exactly the Same*’ a program by Mark Walczynski at 6:00 p.m. at the Berlin Library on Park Ave., Berlin.

This entertaining program examines the cultural, technological and economic aspects of 21st century American lifestyles compared to those of the Native Ameri-

cans who once inhabited this area. Surprising similarities abound. The program is upbeat and insightful for all audiences.

Mark Walczynski is a historian and author who specializes in the French-Colonial and western Great Lakes region. His work has been featured in historical journals, magazines, books and DVDs.



He is retired from the Illinois Dept. of Natural Resources and Illinois Valley Community College.

**Put this free program on your calendar for a fun night.**



**COMMODOE SET AND OTHER ITEMS DONATED TO MUSEUM**

Jean Michaels and her son, Brian, donated this beautiful commode set in honor of Glen and Mabel Michaels to the Museum earlier this year along with three mahogany side chairs with needlepoint seats and several other items. The Commode set and chairs are now part of the permanent displays in the Bottling Works building.

Historic photos, current yearbooks from both the High School and the Middle School and two file cabinets were donated by the Jeff Lindemans.

Several surgical tools with a travel pouch were donated by the Gimenez family in honor of the late Dr. Alonzo Gimenz.

*We appreciate everyone adding to our collections.*

**museum displays for 2018**

This year's feature display has 'Domestic Tools' with items from our collection and contributions from some of our members. They include cooking utensils, cook books and cleaning items.

We have expanded our telephone display with more interactive phones for visitors to try and examples of the telephone down through the years.

Our dress shop/hat shop/shoe store received a new display case that features men's hats and accessories.

**Young Writers Camp took advantage of our typewriter collection for this year's camp**

The seventh annual Young Writer's Camp was held at Berlin High School in June. Twenty-seven students ranging from 4th to 12th grade attended the camp led by teachers Michelle Draves and Jennifer Duffy.

This year's guest presenter was Paul Wiegel of the Fox River Poetry Co. Mr. Wiegel writes custom-made, personalized poems on a vintage Smith Corona typewriter, one request at a time.

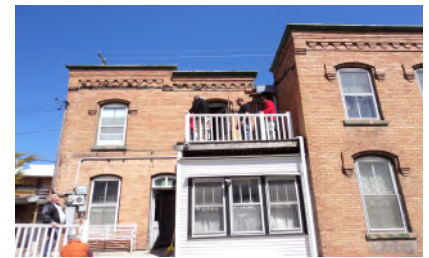
Mrs. Draves asked about the loaning out of some of BAHS' collection. She thought the chance to also use vintage typewriters would add to the camp's experience and BAHS was happy to oblige.



Mrs. Draves shared several of the fun comments and pictures from the campers after the event.



**New Railings Installed On Back Porches**



With the help of some young friends, a crew installed new railings on the upper and lower back porches of the museum building. The production line construction went very smooth.

Dave Olson is now working on replacing the back storm door.

The large oak tree in the side yard was also trimmed back to just the trunk. No more falling branches!



**BAHS gets OK from City to do Market Square monument**

Plans are moving forward now that we have the City's O.K. for the Market Square monument that BAHS proposed recently. This public place was the heart of the city during its growing years and beyond.

The project was first suggested by member, Dick Fortnum, whose family had a business fronting the square for generations. He will also be supplying some of the photos from the family's collection.

The proposed monument will be similar to the one we have for our 1st Nation monument in our yard. More to come in future newsletters.



Although there is the suggestion that the Clark School might have been built and started about 1860 when a land transfer for that year from the Volney Mason farm to Daniel Hanson mentioned a portion was subject to school lease, the official records start with 1866. The clerk's School District Record for Joint School District #9, Town of Aurora, Waushara County and Rushford, Winnebago County (the Clark School) start with the election of Board officers on September 23, 1866. The teacher's register starts from December 19, 1866 to March 1867, as the first four months of school.

A century or more ago most rural schools had sessions of four winter months and four summer months. Extra farm work during spring and autumn made this the most practical time for the children to help at home, so school had to fit in elsewhere in the calendar.

Some years ago Mrs. Jean Safford, the former Jean Clark was interviewed for a newspaper article and she stated she was sure the school was built earlier since the early families who moved there from the east all had small children and were interested in a good education. She said her grandfather, Cornelius Hanson, came to the area from New York State in 1850 with his five children.

It is thought that the name 'Clark' on the school came about because the Clark farm was next door to the school, Benjamin Clark was on the school board, the family always boarded the teacher, and they furnished water until a well was dug.

Over the years an average of twenty pupils attended Clark School each year, sometimes there were several more, especially more boys in winter. Earliest records found in-

## An Early History Of Clark School

cluded a teacher's register for 1866 when Caroline Cleavy was teacher. In listing her 20 pupils she gave a roster of some of the families of the district: Moody, Mason, Pingree, Thompson, Floyd and Getchel. By 1867 the register expanded to include Clarks, Ehrlichs, and Van Houtens. In 1868 added family names were Nicholson, Terrill, Becker, Allen and Rhodes. By 1869 the Kennedy family sent little Fred and Mary to the school. By 1871 Schermerhorn was attending along with children from the Luce, Foster, Johnson, Prill and Farrell families. In 1871 also came Fred and Ted Jordan.

Subjects listed in records of pupil's standings in the first years were simply reading, spelling, arithmetic and geography. Later years added history, writing, mental arithmetic, physiology, grammar, composition and declamation in that order.

Besides providing education to the rural students, the schools acted as the neighborhood social center in the days when the farmer was isolated by roads alternately mud, dust and snow. It was a gathering place for political meetings, husking bees, literary societies, temperance meetings, Fourth of July celebrations, spelling bees, debating clubs, card parties and even religious meetings if no church had been constructed by a particular sect in the area.

An 1866 document lists the valuation and tax levies for Joint District No. 9 Town of Aurora, valued at \$9,221 and Town of Rushford, Winnebago County was \$7,370. Together they raised a total of \$170 for school purposes. How they spent that \$170 is recorded in the minutes of the 1867 school district meeting. They noted that \$130 was needed to pay the teacher's wages for the coming year, \$15 was needed for cord wood to heat the place, and \$25 took care of all

other expenses.

Teacher's salaries ranged from \$18 a month in 1867 to \$50 a month in 1917. By the time the records were turned over in 1960 when the school was closed and consolidated with the Berlin School District, the teacher was earning \$275 a month.

The school building was purchased by the Berlin Historical



Society and moved from its original site to Riverside Park in Berlin in 1963. Funds from the City Council helped in the restoration. The building had been emptied of all furnishings when it was moved. After three years of restoring and gathering rural school artifacts it opened to the public in September, 1966. It served as the Society's only museum for a number of years.

For a time local graduates of Clark School banded together to pay expenses of maintaining the school and doing some of the work but now it is the sole responsibility of the Berlin Historical Society.





WE'RE ON THE WEB  
BERLINAREA HISTORICAL SOCIETY.COM

**NEWSLETTER OF THE  
BERLIN AREA  
HISTORICAL**

P. O. Box 83  
Berlin, WI 54923 or  
111 S. Adams Ave.  
Berlin WI 54923

Phone: 920-361-2460  
E-mail: [contact@berlinareahistoricalsociety](mailto:contact@berlinareahistoricalsociety)  
Facebook: berlin area historical society

Meetings are held on the 2nd Wednesday during the months of Jan. through May and Sept. through Dec. at 6:30 p.m. at the Berlin Public Library, corner Park Ave and N. Pearl St. Guests are always welcome

The Berlin Area Historical Society is a fully recognized non-profit Educational Institute affiliated with the Wisconsin Historical Society. The Mission of the Society is to preserve and interpret the history of the Berlin Area.

Currently the Society owns and operates four museum buildings. The Museum of Local History, located at 111 S. Adams Ave includes a two-story brick house, the former Kroll Bottling Works and the former Huser Blacksmith Shop. This museum complex is open on the second and fourth Sundays from Memorial Day to Labor Day from 1-4 p.m. and always by appointment.

The one-room school house, Clark School is located at the entrance to Riverside Park on Water St. and is open by appointment.

Call 920-361-2460 for information on these museums or to make an appointment.

The Berlin Area Historical Society is maintained by DONATIONS and membership. All persons interested in history are encouraged to join.

**JOIN THE BERLIN AREA  
HISTORICAL SOCIETY**

Name.....  
Street.....  
City & State.....  
Telephone.....  
E-Mail.....

Individual Dues—\$10.00

Family —\$15.00

Make Checks payable to: Berlin Area Historical Society and mail to  
P. O. Box 83, Berlin WI 54923

Do you have an e-mail address? Or a new address? Please let Bobbie Erdmann know so that we can keep our membership lists up to date.  
bobbie  
[@centurytel.net](mailto:bobbie@centurytel.net)  
920-361-2460